

**CCL3 Antibody (C-term)**  
**Affinity Purified Rabbit Polyclonal Antibody (Pab)**  
**Catalog # AP8527b****Specification**

---

**CCL3 Antibody (C-term) - Product Information**

Application	IHC-P, WB,E
Primary Accession	<a href="#">P10147</a>
Other Accession	<a href="#">P16619</a>
Reactivity	Human, Mouse
Host	Rabbit
Clonality	Polyclonal
Isotype	Rabbit IgG
Antigen Region	59-87

**CCL3 Antibody (C-term) - Additional Information****Gene ID** 6348**Other Names**

C-C motif chemokine 3, G0/G1 switch regulatory protein 19-1, Macrophage inflammatory protein 1-alpha, MIP-1-alpha, PAT 4641, SIS-beta, Small-inducible cytokine A3, Tonsillar lymphocyte LD78 alpha protein, MIP-1-alpha(4-69), LD78-alpha(4-69), CCL3, G0S19-1, MIP1A, SCYA3

**Target/Specificity**

This CCL3 antibody is generated from rabbits immunized with a KLH conjugated synthetic peptide between 59-87 amino acids from the C-terminal region of human CCL3.

**Dilution**

IHC-P~~1:50~100

WB~~1:1000

E~~Use at an assay dependent concentration.

**Format**

Purified polyclonal antibody supplied in PBS with 0.09% (W/V) sodium azide. This antibody is purified through a protein A column, followed by peptide affinity purification.

**Storage**

Maintain refrigerated at 2-8°C for up to 2 weeks. For long term storage store at -20°C in small aliquots to prevent freeze-thaw cycles.

**Precautions**

CCL3 Antibody (C-term) is for research use only and not for use in diagnostic or therapeutic procedures.

**CCL3 Antibody (C-term) - Protein Information****Name** CCL3

**Synonyms** G0S19-1, MIP1A, SCYA3

**Function** Monokine with inflammatory and chemokinetic properties. Binds to CCR1, CCR4 and CCR5. One of the major HIV-suppressive factors produced by CD8+ T-cells. Recombinant MIP-1-alpha induces a dose- dependent inhibition of different strains of HIV-1, HIV-2, and simian immunodeficiency virus (SIV).

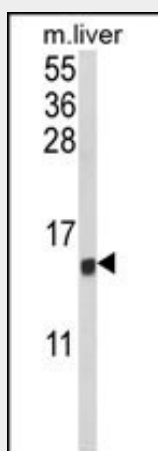
**Cellular Location**  
Secreted.

### CCL3 Antibody (C-term) - Protocols

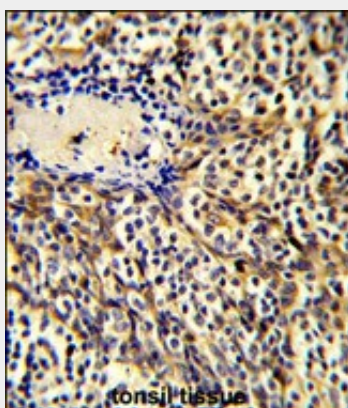
Provided below are standard protocols that you may find useful for product applications.

- [Western Blot](#)
- [Blocking Peptides](#)
- [Dot Blot](#)
- [Immunohistochemistry](#)
- [Immunofluorescence](#)
- [Immunoprecipitation](#)
- [Flow Cytometry](#)
- [Cell Culture](#)

### CCL3 Antibody (C-term) - Images



Western blot analysis of CCL3 Antibody (C-term) (Cat. #AP8527b) in mouse liver tissue lysates (35ug/lane). CCL3 (arrow) was detected using the purified Pab.



Formalin-fixed and paraffin-embedded human tonsil tissue reacted with CCL3 Antibody (C-term), which was peroxidase-conjugated to the secondary antibody, followed by DAB staining. This data demonstrates the use of this antibody for immunohistochemistry; clinical relevance has not been evaluated.

#### **CCL3 Antibody (C-term) - Background**

Macrophage inflammatory protein-1 is a so-called monokine that is involved in the acute inflammatory state in the recruitment and activation of polymorphonuclear leukocytes.

#### **CCL3 Antibody (C-term) - References**

Hirashima,M., et.al., DNA Seq. 3 (4), 203-212 (1992) Blum,S., et.al., DNA Cell Biol. 9 (8), 589-602 (1990)

#### **CCL3 Antibody (C-term) - Citations**

- [CCR1 Inhibition Ameliorates the Progression of Lupus Nephritis in NZB/W Mice.](#)
- [Increased infiltrated macrophages in benign prostatic hyperplasia \(BPH\): role of stromal androgen receptor in macrophage-induced prostate stromal cell proliferation.](#)